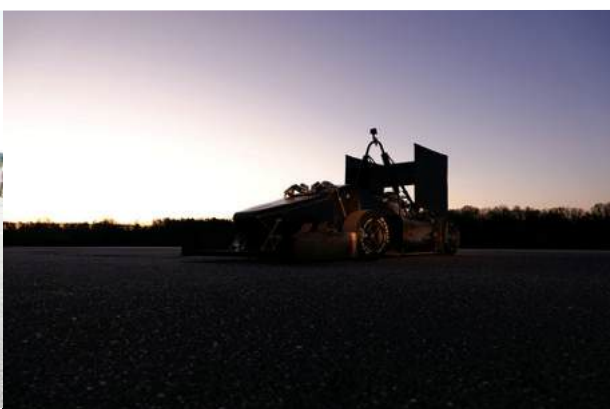




# **DUKE UNIVERSITY MOTORSPORTS**

## **2025 SPONSOR HANDBOOK**



# Table of Contents

---

**About Us** \_\_\_\_\_ **3**

**Team Structure** \_\_\_\_\_ **4**

**Season Goals** \_\_\_\_\_ **5**

**Why Support Us** \_\_\_\_\_ **6**

**Sponsorship** \_\_\_\_\_ **7**

**2024 Sponsors** \_\_\_\_\_ **8**

**Contact Us** \_\_\_\_\_ **9**



# About Formula SAE

The Formula SAE (FSAE) program, organized by SAE International, is an annual engineering competition that gives University teams around the world a simple prompt: *build the fastest formula-style racecar possible within the rulebook.*

Teams spend thousands of work-hours over a full calendar year designing, building, and testing their cars from the ground up before bringing them to Michigan International Speedway each May to compete. The competition itself is composed of static and dynamic events judged by industry experts, allowing students to showcase their engineering know-how, market analysis, and speed on track.

## Competition Breakdown

### Static Events



Cost  
Analysis



Business  
Presentation



Engineering  
Design

### Dynamic Events



Acceleration



Skid Pad



Autocross



Endurance



Fuel  
Efficiency

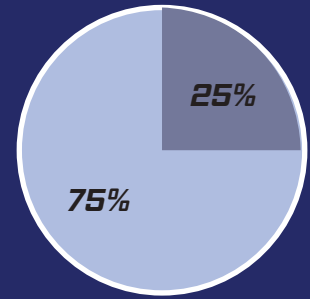
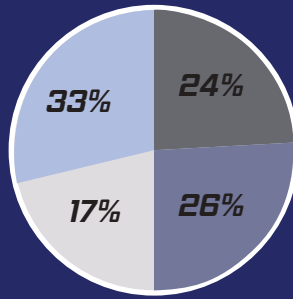
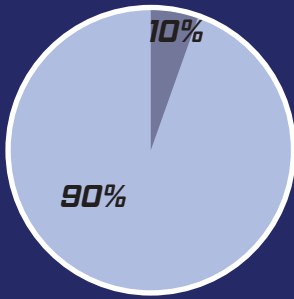
## Who Are We?

*Duke University Motorsports* is more than just an FSAE team – we are a group of aspiring engineers committed to providing the most *practical, hands-on, and rewarding experience on campus* to our team members. We come from various backgrounds and levels of expertise, but we're united by our goal and love for racing.

From day one, our engineers spend time in the garage, computer lab, machine shop, and our testing lot developing our car, picking up invaluable technical, time management, and interpersonal skills along the way – no prior experience necessary! On top of competing throughout the year, we are involved in student activity fairs, showcases, and volunteering efforts within the Duke and Durham, NC community, striving to *represent our university at the highest level.*



# Team Breakdown



## SCHOOL

- Pratt School of Engineering
- Trinity College of Arts and Sciences

## CLASS YEAR

- First Years
- Junior
- Sophomore
- Senior

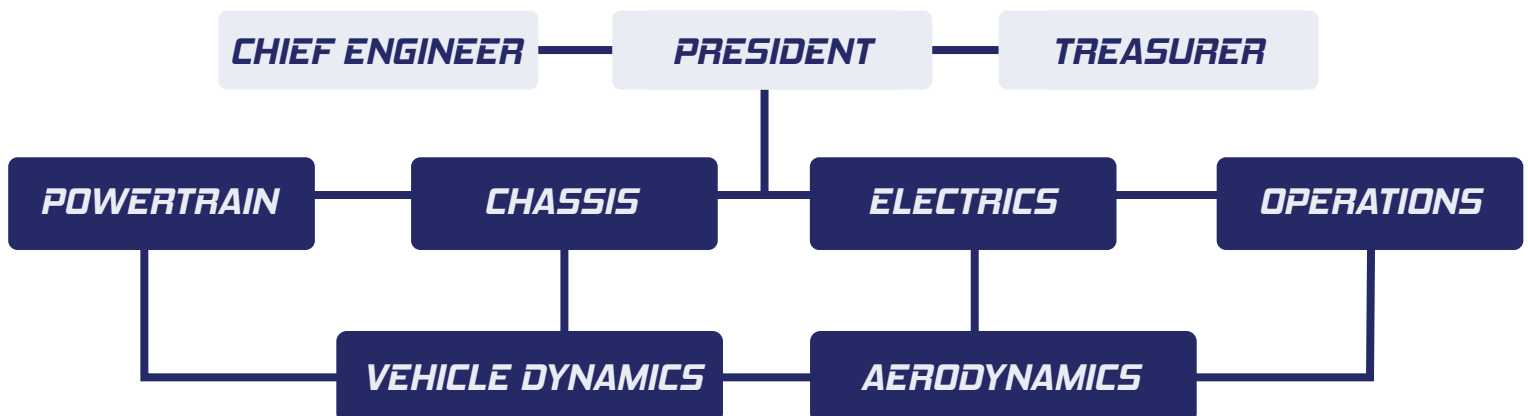
## GENDER

- Male
- Female

## Team Structure

Our organization is managed by our executive team: the President, Chief Engineer, and Treasurer. Design and manufacturing work is split amongst **six vehicle subsystems**, each made up of 5-15 team members with expertise in a certain area of the car.

While members generally gravitate towards one or two subsystems, our leadership emphasizes inter-subsystem collaboration as much as possible, so every member has the opportunity to be involved in work they are excited about.



# 2024 Season Achievements

Duke Motorsports has been busy over the past year! Last October, competing with our 2023 car, the team placed **3rd in the ICE class** of the Michelin FSAE Shootout. Afterwards, it was pedal to the metal on our 2024 challenger. We accelerated our design timelines, allowing us to drive the new car for the first time on March 5th – over a month earlier than the previous year!

22 drive days later and 2 front wings later, Duke Motorsports finished **#47 out of 119** competing teams at FSAE Michigan, despite an uncontrollable fuel quality issue preventing us from competing in the Endurance and Fuel Efficiency events.

Some specific competition highlights include:

- 2nd car to pass technical inspection
- 6th overall in the Business Presentation event
- 18th overall in the Autocross event

# 2025 Season Goals

Beyond the successes of 2024, Duke Motorsports is looking to push ourselves to historic heights ahead of the 2025 competition season. The team has its sights set on 625 points in Michigan – **the most in team history!**

To accomplish this, we plan to follow detailed development timelines in pursuit of an earlier first drive day, allowing us to increase the scope of our testing regimen. Additionally, an increased internal focus on robustness of design and thorough documentation will set the team up for success in the years to come.







# Why Support Us

Supporting Duke Motorsports is *not just a donation to a racecar*. It's an investment in our mission: to provide our team members with the tools, support, and hands-on experience to develop, both as engineers and as people.

Our reach extends far beyond the walls of campus – our engineers go on to succeed in the classroom, the workplace, and their personal lives in a large part due to the lessons they learned on the team, made possible by donations like yours. *Your support will go towards:*

- Vehicle components, tools, and software
- Team programming and engagement
- Advanced manufacturing
- Competition fees and travel expenses

We thank you for your consideration – Let's go Duke!

# Sponsorship

Although Duke University and the Pratt School of Engineering provides us with resources to build our vehicle, we also rely on the help of corporate sponsors and individual donations to reach our goals. We welcome monetary sponsorships as well as product or service donations.

## Partner Tiers

### **Bronze: \$500+**

- Name on Duke Motorsports Website
- Social media post
- Access to team newsletters
- Small logo on competition vehicle

### **Silver: \$1,500+**

- All bronze perks, plus:
- Logo on the Duke Motorsports website
- Medium logo on competition vehicle

### **Gold: \$5,000+**

- All silver perks, plus:
- Access to the team resume book
- Invitation to vehicle roll out

### **Platinum: \$10,000+**

- All gold perks, plus:
- Team apparel
- Invitation to campus test sessions

### **Blue Devil \$25,000+**

- All platinum perks, plus:
- Invitation to FSAE Michigan
- Extra large logo in a primary location on competition vehicle

## How to Donate

Thank you so much for considering a donation towards Duke University Motorsports. There are two possible ways to support us.

All donations are [501\(c\)\(3\) tax deductible](#) through the Pratt School of Engineering.

### **Via Check**

- Checks must be made out to **Duke University**, and the memo line should specify **"Duke University Motorsports"**
- Checks mailed to :

Duke University  
110 Science Drive, Box 90271  
Durham, NC 27708

### **Online Donation Form**

- Visit [gifts.duke.edu](https://gifts.duke.edu)
- Click "Search for an area" and enter "Pratt Formula SAE Care Team Fund"
- Enter gift amount and continue to payment

# 2024 Sponsors

## BLUE DEVIL

Duke | ENGINEERING  
ALUMNI ASSOCIATION



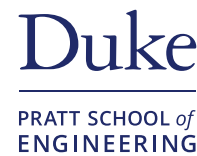
## PLATINUM



## GOLD



## SILVER



## BRONZE







# Contact Us

---

**David Gorman | President**

- [david.gorman@duke.edu](mailto:david.gorman@duke.edu)
  - (612) 860 - 4242
- 

**Cody Rosolowsky | Chief Engineer**

- [cody.rosolowsky@duke.edu](mailto:cody.rosolowsky@duke.edu)
  - (267) 406 - 8284
- 

**Ritwik Bhattacharjee | Treasurer**

- [ritwik.bhattacharjee@duke.edu](mailto:ritwik.bhattacharjee@duke.edu)
  - (720) 518 - 6353
- 

**Chloe Smithen | Operations Lead**

- [chloe.smithen@duke.edu](mailto:chloe.smithen@duke.edu)
  - (973) 668 - 6754
- 

✉ [dukeuniversitymotorsports@gmail.com](mailto:dukeuniversitymotorsports@gmail.com)

📍 100 Science Drive  
Hudson Hall Room 144  
Durham, NC, 27708

🌐 [Duke University Motorsports](#)

📷 [@DukeFSAE](#)

✉ [@DukeFSAE](#)

📺 [@DukeMotorsports](#)

🌐 [dukefsae.com](http://dukefsae.com)

---

To learn more about us, read our blog, and view our photo galleries, please visit our website: [dukefsae.com](http://dukefsae.com).

Please reach out to our team email or our leadership directly with any inquires! We look forward to hearing from you.